

VIALE ELVEZIA 22, MILAN



TOTAL AVAILABLE AREA	938 sqm	
ASKING RENT	250,000 €/year	
AVAILABILITY	Immediate	
GRADE	C	
GENERAL FEATURES	High ceiling	Car parking spaces
	Air conditioning with fan coils	Bike parking
	Good lift	
COMMENTS	Independent entrance	
	Current use: showroom	
	Possibility of Sale	

Public transport



Metropolitana
• MM2 - Moscova



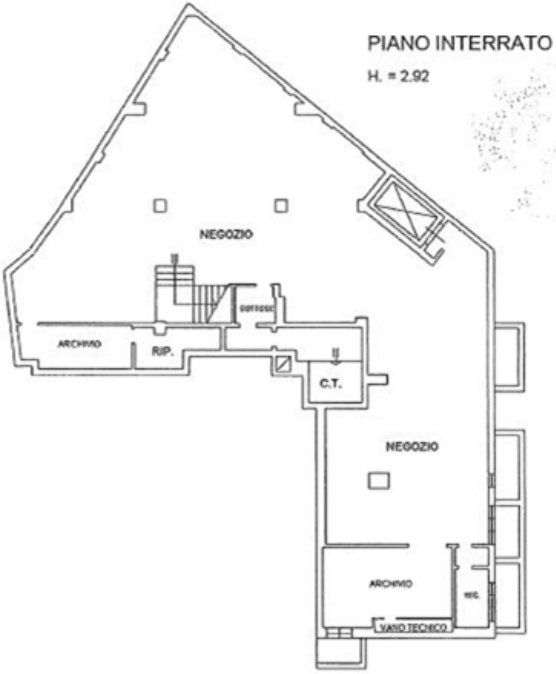
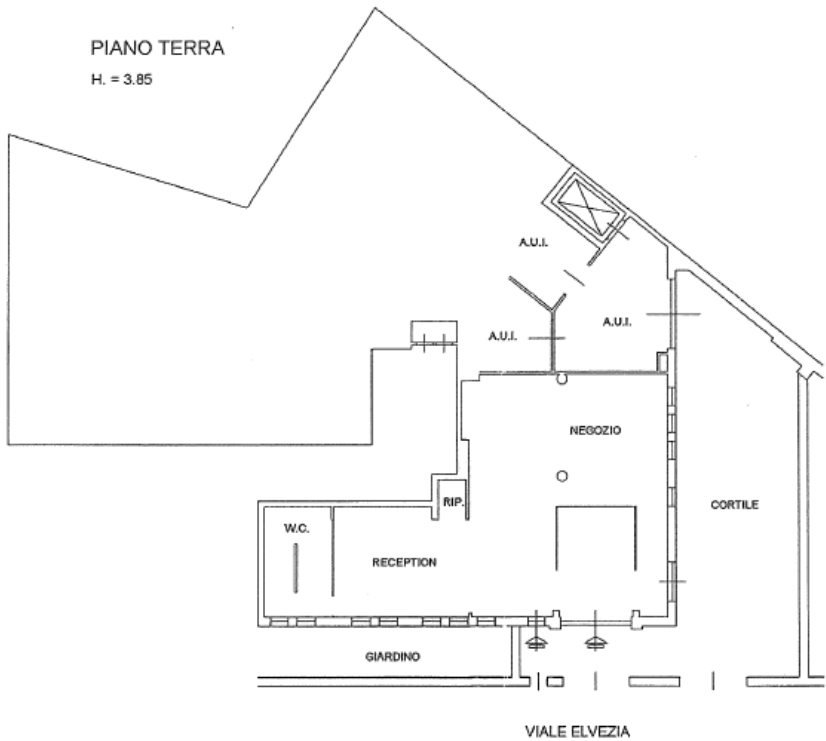
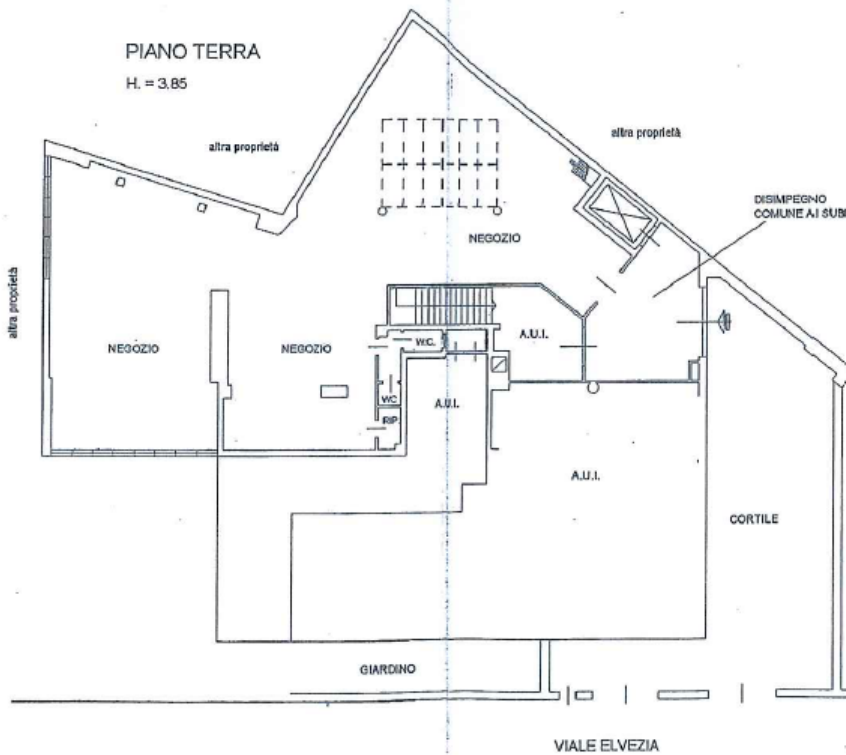
Autobus
• 43: Piazza Greco - Piazza Firenze
• 54: Lambrate - Duomo



Tram
• 1: Greco - Piazza Castelli
• 10: Viale Lunigiana - 24 Maggio
• 12: Roserio - Viale Molise
• 14: Cimitero Maggiore - Lorenteggio

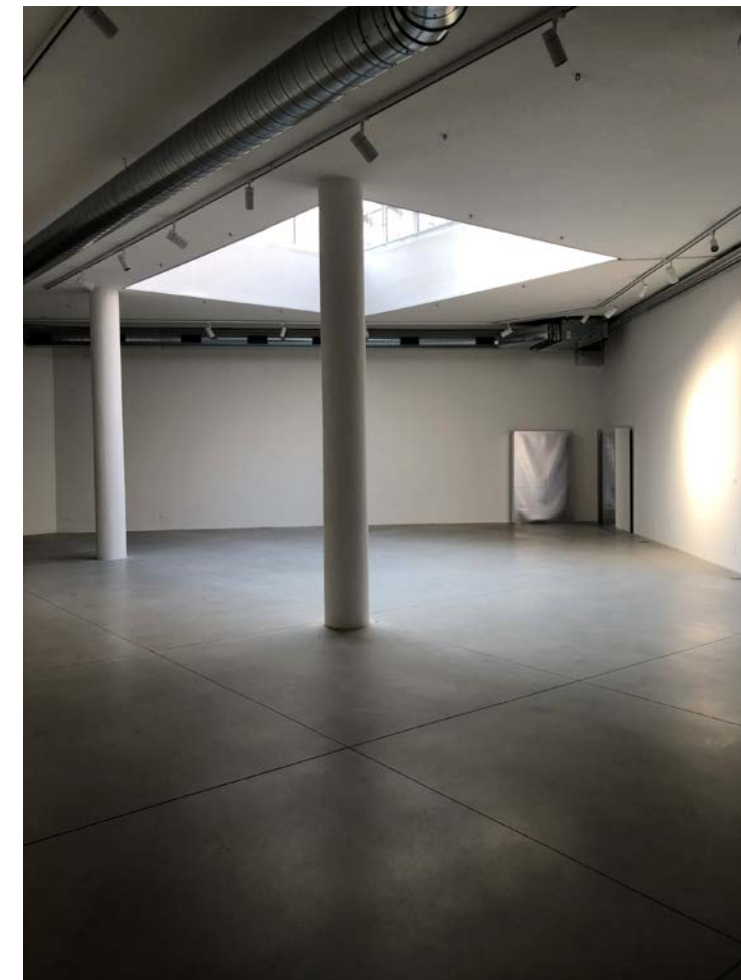
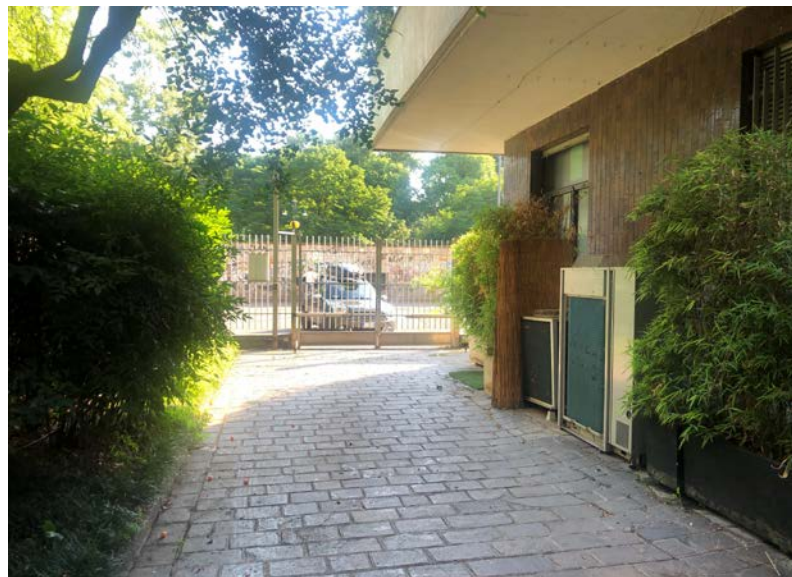


Floor	Available area (sqm)	Uso
-1	348	Archives
0	590	Showroom



VIALE ELVEZIA 22, MILAN

GROUND FLOOR



VIALE ELVEZIA 22, MILAN BASEMENT

